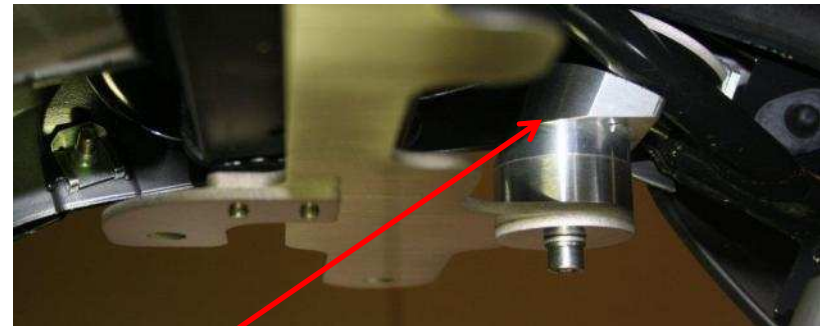
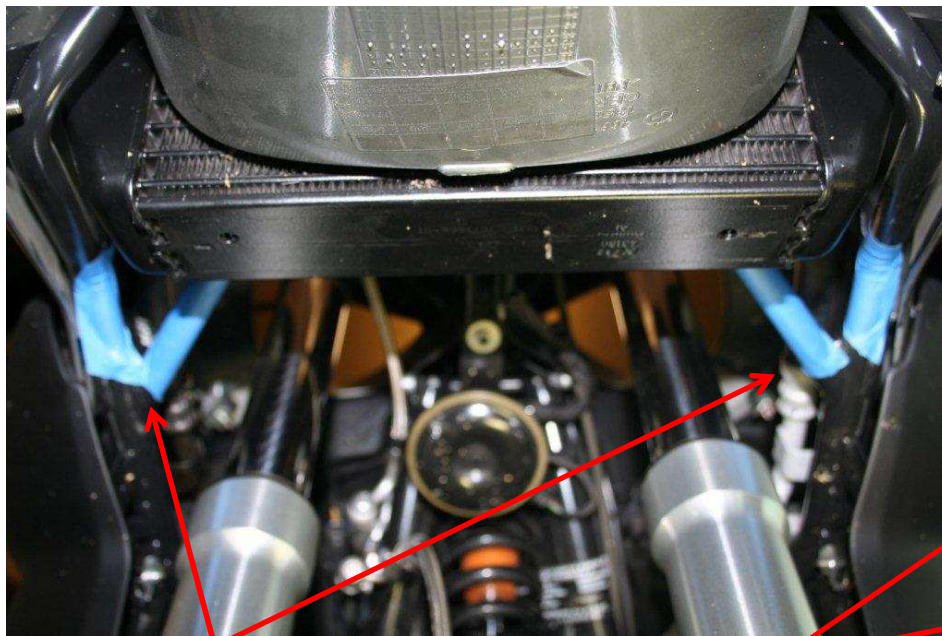




**INSTALLATION HELP:  
EXCEL CYCLE WERKES  
Light Bar for  
2005-2007 R1200GS**

Installed Light Bar - side & bottom views  
(shown with optional light mounts)



“Blue tape” is shown on the support tubes - these are the mounting points for the bar.  
See the installation instructions that are provided with YOUR NEW light bar